

# DIMMER BOX USER MANUAL



## Instruction

This dimming transfer box is prepared for connecting multiple lights, including two independent control modules. The upper one is for white light dimming, and the lower one is for UV lighting dimming. Each module controls the grow on/off and dimming by the coordination of two switches.

### 1. Definition:

CH1	Inlet
CH2	Outlet
ON/OFF DIMMER	Group dimming on/off control
ON/OFF CONNECT	Group lighting on/off control

### 2. Default setting:

DIMMER: ON    CONNECT: ON    Dimming: MIN (0%)

### 3. Function:

#### 3.1 How to control group fixtures on/off

Switch all the fixtures' "DIMMER" and "CONNECT" on, the fixtures in the group can be on/off controlled by switching on/off any one of the fixture.

#### 3.2 How to dim group fixtures

Switch all the fixtures' "DIMMER" and "CONNECT" on, the fixtures in the group can be dimmed by spinning the dimmer on any one of the fixture.

#### 3.3 How to control single fixture

If you need to control any single one of the fixture, please switch the "DIMMER" on and "CONNECT" off, and then the fixture can be individually controlled, and wouldn't impact others.

#### 3.4 How to dim some part of fixtures.

Set a group for the part needing dimming by switching their "DIMMER" and "CONNECT" on, and switch the "CONNECT" of the others to off. Now you have two groups: group A with "CONNECT" on, group B with "CONNECT" off. Dimming any one of the fixture in group A, all the fixtures in group A would be at the same dimming status.

#### 3.5 Connect external smart dimming device

This product can be controlled by an external smart dimming device, which with RJ11 connector. Only two steps:

1st step: connect the smart device.

2nd step: set a group for smart control fixtures by switching the "DIMMER" off and "CONNECT" on, then enjoy your smart dimming control.

If you want to manually control one of the fixture, just switch "DIMMER" on and "CONNECT" off.

## 4. Method of troubleshooting when problems arise:

### 4.1 Unable to turn on the light

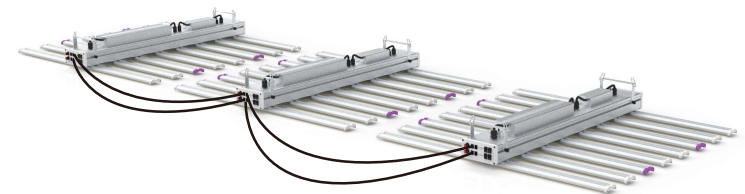
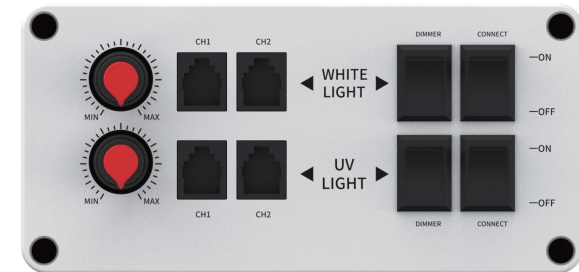
Check all the dimmer, make sure they are at 100% position.

### 4.2 Out of sync

Power on, group control the fixtures, but some are out of sync. It should be the "CONNECT" at the wrong position, please correct it to "on" position.

### 4.3 Unable dimming

Power on, dim the fixture but without response. It should be the "DIMMER" at the wrong position, please correct it to "on" position.



This device complies with part 15 of the FCC Rules. Operation is subject to the following two conditions: (1) This device may not cause harmful interference, and (2) this device must accept any interference received, including interference that may cause undesired operation.

# Installation & Usage Guide

electrivo

## WARNING AND CAUTION

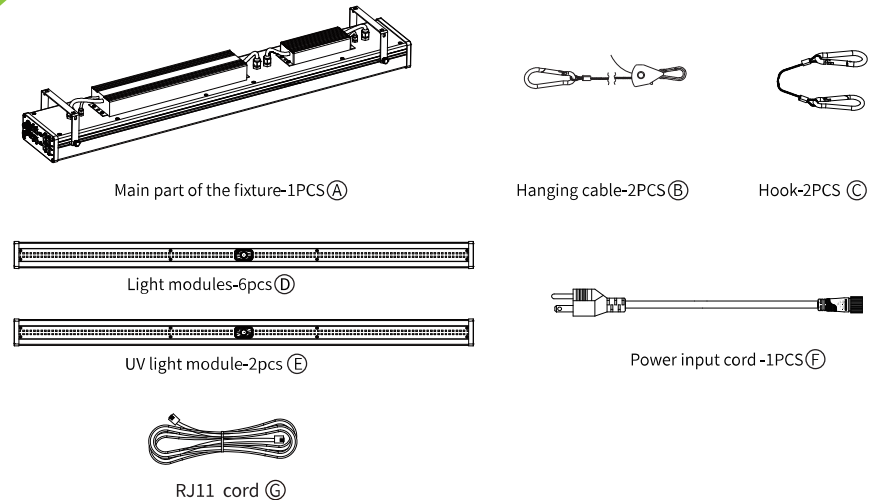
- > Please read the following instructions carefully before using this grow lighting fixture.
- > Make sure mains power is switched off before connecting the light fixture.
- > Don not connect or disconnect the LED fixture under load.
- > Always allow for a cool down period of at least 30 minutes before touching the LED bars.
- > Please DO NOT use this product outdoors.
- > Connect the cables according to local rules ,safety regulations and electrical code.
- > Mounting and installing of the LED fixture may only be executed by certified service person,in accordance with the applicable local laws and regulations.
- > **WHEN ASSEMBLING THE PRODUCT, PLEASE MAKE SURE THE COLOR OF THE LIGHT MODULE SHOULD BE THE SAME COLOR THE INSTALLATION BASE.**
- > **ALL THE LIGHT MODULES MUST BE ATTACHED TO THE CHASSIS AND WELL CONNECTED BEFORE TURNING ON THE POWER**
- > **EXPOSURE TO UVB LIGHT CAN DAMAGE SKIN OR EYES. TURN LIGHT OFF BEFORE ENTERING THE ROOM - FOR USE ON PLANTS ONLY.**

## PLANNING THE INSTALLATION

Read all instructions before installation. Before starting installation of this fixture or removal of a previous fixture,disconnect the power by turning of circuit breaker or by removing the fuse at the fuse box.

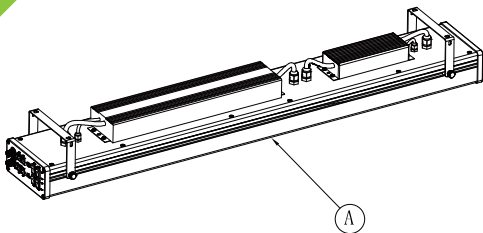
## Installation method 1: Hoisting

01



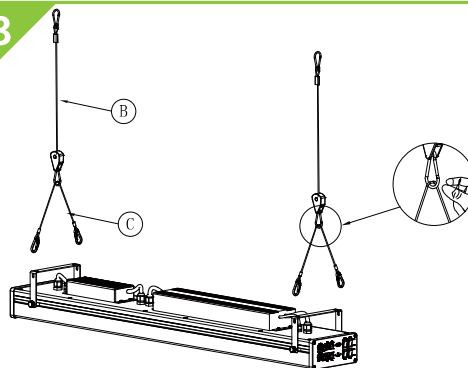
- Take the main part out

02



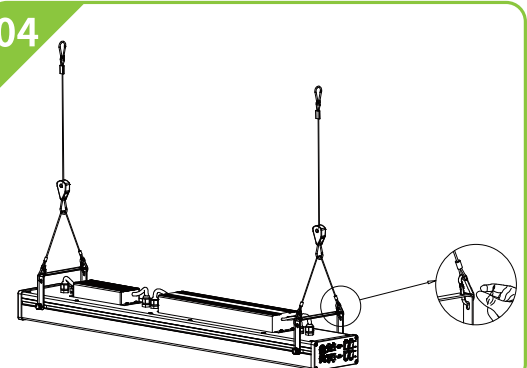
- Take the main part out

03



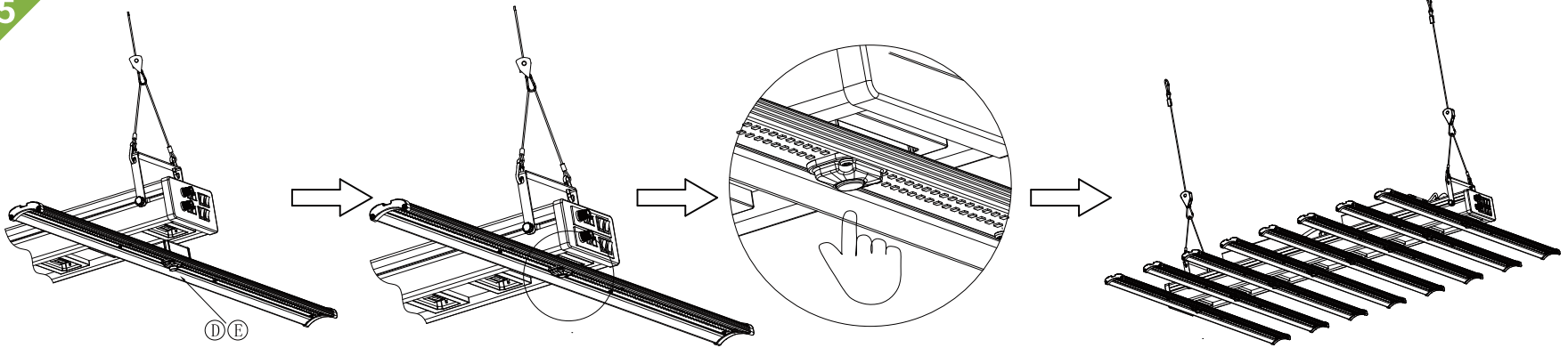
- Hook the main part.

04



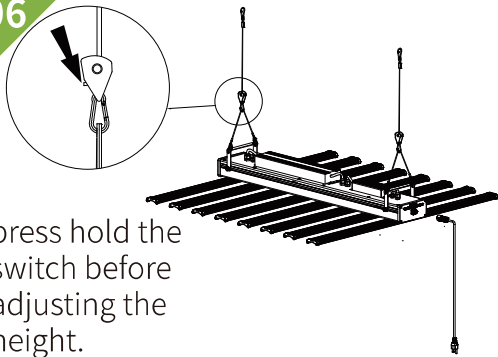
- Hook the main part.

05



•Attach the light module to the chassis, press the button to lock. (Press again to remove the light module from the chassis.) The UV light module should be installed on the third and the sixth purple base.

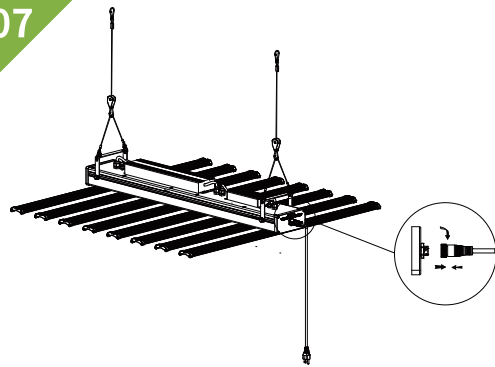
06



press hold the switch before adjusting the height.

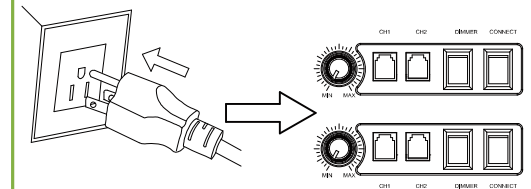
•Adjust the height by pull the cable.

07



•Connect the power cord.

08



•Plug in the power.  
•Dim to the desired light.